



15 BATEMAN STREET

Private Hire

15 Bateman Street is located in the heart of historic Soho, conveniently situated only minutes walk from Oxford Circus and Tottenham Court Road.

The gallery spaces may be hired for a variety of events with a capacity of up to 150 standing.

This is a unique venue that offers a flexible layout and is perfect for all types of art, fashion, food, music, design events and pop-ups.

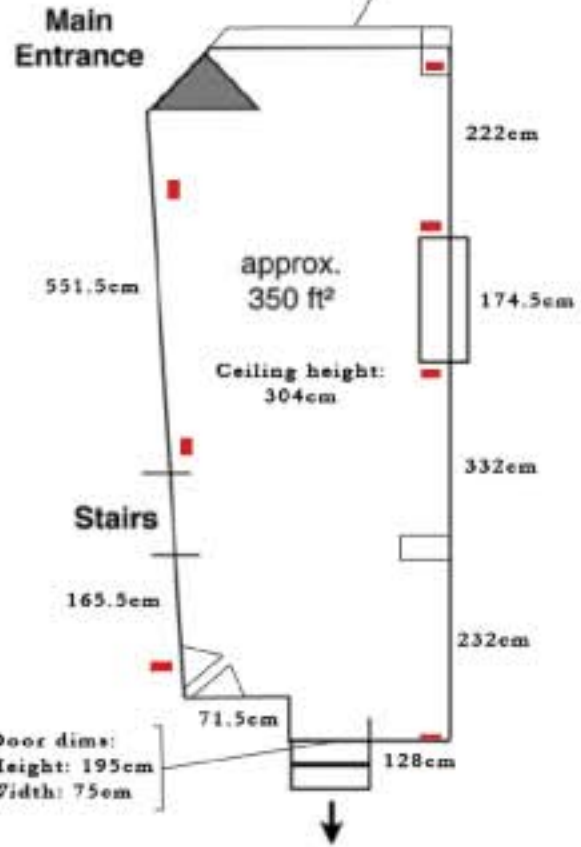
For further information please contact

info@15batemanst.co.uk

0207 613 7203

Main Room

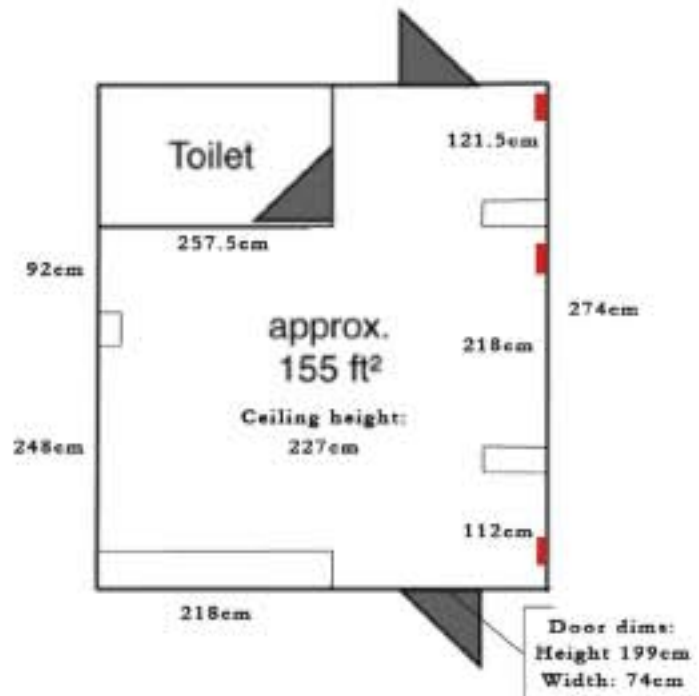
Front window dims:
Width: 246.5cm
Height: 212.5cm
Depth: 32.5cm



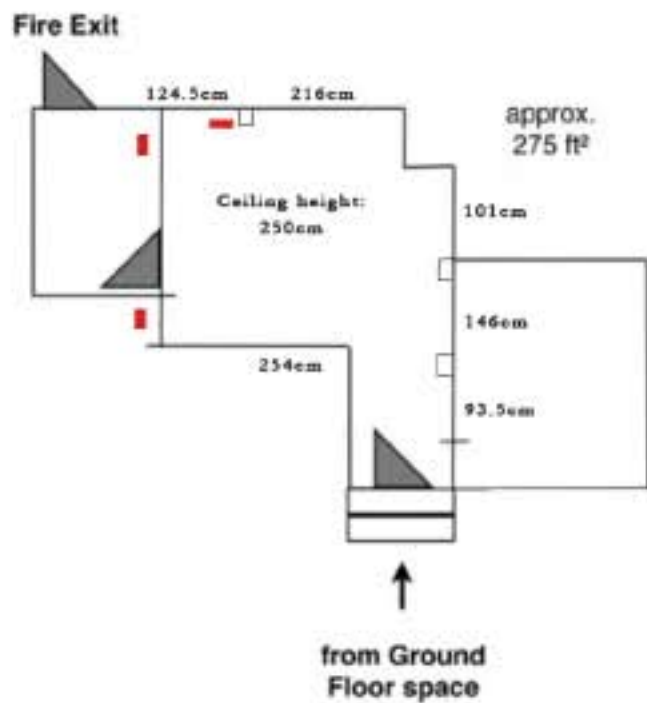
■ Location of double sockets



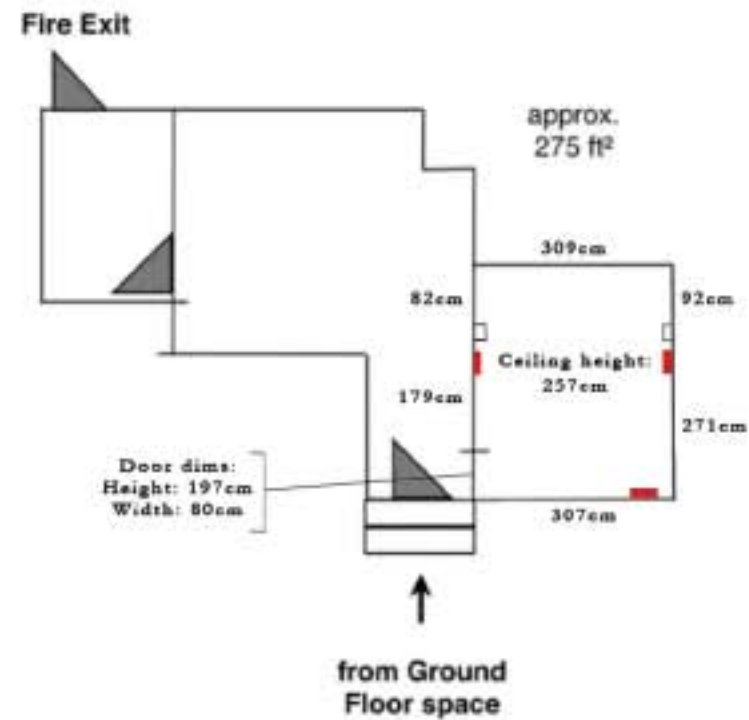
Annexe



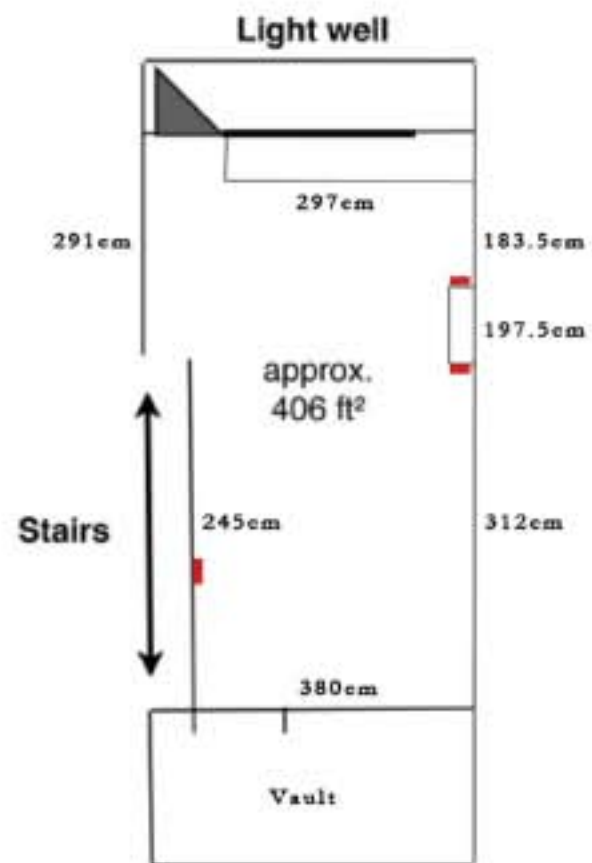
Back Room



Private Viewing Room



Lower Ground





FACILITIES / FEATURES

- Kitchen with dishwasher and fridge
- Integrated sound system throughout building
- Fully adjustable flood and spot lighting
- Rear access for on/off loading
- Large street facing ground floor window
- Wifi and Broadband
- CCTV, alarm and intercom system

We have many years' experience organising exhibitions and are happy to help with all aspects of exhibition coordination. As well as recommending local suppliers and sub-contractors, we can provide assistance with planning private view events and evening receptions.

Our rates are competitive and we will work directly with you to create a specific rates package to suit your event.





alexandalex



Boden

CLAUDIE
PIERLOT



EL
LONDON

ELEPHANT
FAMILY
*Protecting Asian elephants
and their habitat*

GEOX

ghd

gunpowder

H&M

BOSS
HUGO BOSS

HYMN
EST. LONDON
"OUR DAILY BREAD"

JO
LOVE
LIFE
LAUGH

L'OCITANE
IN FARMACE

L'ORÉAL



Louche

Maison
Francis Kurkdjian
Paris

MISSGUIDED
EST. 1997



OLIVER
BONAS



Poundland

REVLON®

SISLEY

URBAN OUTFITTERS

W
WEDGWOOD

ASOS
discover fashion online

Etsy

Dr. Hauschka
Skin Care